

ESCO

WORLD CLASS. WORLDWIDE.

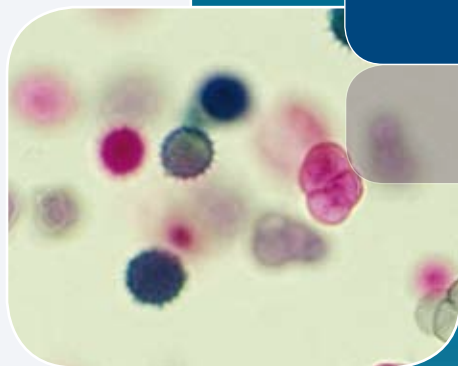


*Airstream Horizontal Laminar Flow Clean Bench,
Model AHS-8C.
Shown with optional stand.*

Airstream.

Up-Sized 2.4m / 8' Horizontal Laminar Flow Clean Benches

Esco is an industry leader in the development of professional quality laminar flow clean benches. With tens of thousands sold throughout the life sciences market worldwide, Esco continues to reinforce its reputation for dependability by providing reliable protection for samples and work processes in a multitude of applications.



Airstream® Horizontal Laminar Flow Clean Benches

Provide Product Protection

ULPA Filtration System

ULPA filters operate at a typical efficiency of >99.999% at 0.1 to 0.3 micron sizes, providing superior product protection over conventional HEPA filters.

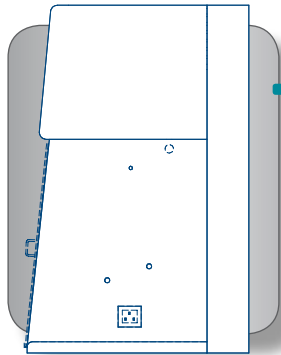


High Performance Blower System

German made ebm-papst®, permanently lubricated, centrifugal motor/blowers with external rotor designs.

Motors are selected for energy efficiency, compact design, and flat profile. Completely integrated assembly optimizes motor cooling.

All rotating parts are balanced for smooth, quiet, vibration-free operation.



User Interface

An angled front, curved work surface front edge, and 34.5" tall work zone promotes ergonomics.



Airstream Horizontal Laminar Flow Clean Bench, Model AHS-8C_

Air Cleanliness Standards (ISO 14644-1, Air Cleanliness Particle Limits (No. of Particles / m ³))						
Particle Size (µm)	Cleanliness Class					
	Class 1	Class 2	Class 3	Class 4	Class 5	Class 6
0.1	10	100	1000	10000	100000	1000000
0.2	2	24	237	2370	23700	237000
0.3	-	10	102	1020	10200	102000
0.5	-	4	35	352	35200	35200
1.0	-	-	8	83	835	8320
5.0	-	-	-	-	29	293

Superior Air Cleanliness

All Esco horizontal laminar flow clean benches provide ISO Class 3 air cleanliness within the work zone as per ISO 14644.1, significantly cleaner than the usual Class 5 classification on clean benches offered by the competition.



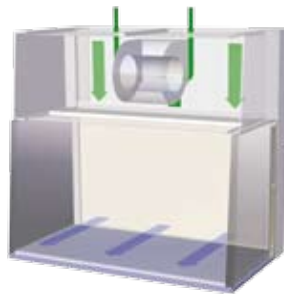
ESCO Standard Control System

Reliable rocker switches and easy-to-read gauge for peace of mind and durability.



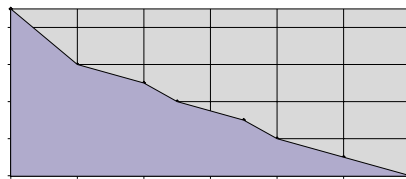
Quality Construction

The clean bench interior is constructed of stainless steel which makes cleaning a breeze. A removable stainless steel diffuser protects the filter from accidental damage and improves airflow uniformity.



Stable, Constant Airflow

The blower system automatically adjusts to maintain airflow as the filter loads in between annual certifications.



Built-In Protection

External surfaces are powder coated with Escó **ISOCIDE™** to eliminate 99.9% of surface bacteria within 24 hours of exposure.

Key Features

- Airstream Series clean benches are useful for mycology, food microbiology, plant and mammalian cell culture, clinical pharmacy and hospital protocols, cleanrooms, semiconductor assembly, pharmaceutical, aerospace and medical devices industries, where product protection is required.
- ULPA filters (per IEST-RP-CC-001.3) tested to a typical efficiency of >99.999% for 0.1 to 0.3 micron particles are better than HEPA filters. ULPA filters last as long as conventional HEPA filters and have similar replacement costs.
- An additional disposable pre-filter traps large particles in the inflow air prior to reaching the main filter, protecting against damage and prolonging filter life.
- All Escó products are manufactured for the most demanding laboratory applications. All components are designed for maximum chemical resistance and enhanced durability for a long service life. The main body of the clean bench is constructed of industrial-grade electrogalvanized steel.
- One piece formed stainless steel work surface with a curved front edge is designed for maximum operator comfort. A raised edge at the back of the work zone prevents spills from damaging the filter.
- Built-in warm white, electronically ballasted, 5000k lighting provides excellent illumination of the work zone and reduces operator fatigue. The reliable lighting system is zero-flicker and instant start.
- Escó Laminar Flow Clean Benches have been tested for cross-contamination and product protection using microbiological test methods adopted from EN12469.
- Each clean bench is individually factory tested for safety and performance in accordance with international standards.

	Cabinet Performance	Air Quality	Filtration	Electrical Safety
Standards Compliance	EN 12469 IEST-RP-CC002.2, Worldwide	ISO 14644.1 Class 3, Worldwide AS 1386 Class 1.5, Australia JIS B9920 Class 3, Japan	EN-1822 (H14), Europe IEST-RP-CC001.3, Worldwide IEST-RP-CC007.1, Worldwide IEST-RP-CC034.1, Worldwide	IEC 61010-1, Worldwide EN 61010-1, Europe UL 61010-1, USA CANV CSA-C22.2, No.61010-1

Accessories and Options

All Esco Airstream, vertical and horizontal flow clean benches are covered by an extended 3 year warranty, excluding consumable parts and accessories. Contact your local Sales Representative for warranty details.

Support Stands

- Fixed height, available 711 mm (28") or 860 mm (34")
 - With leveling feet (SPL)
 - With casters (SPC)

- Adjustable height, hydraulic range 711 mm (28") to 860 mm (34")
 - Manual or electrical lift (SPM)
 - With casters

Electrical Outlets and Utility Fixtures

- Electrical outlet, ground fault, North America
- Electrical outlet, Euro/ Worldwide
- Petcock (air, gas, vacuum)
 - North America (American) style.
 - Euro / Worldwide style DIN 12898, DIN 12919, DIN 3537

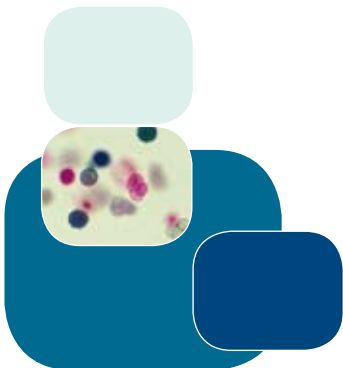
Cabinet Accessories

- Germicidal UV lamp
- Transparent front cover (recommended when UV lamp is used)
- PVC armrest
- Height-adjustable lab chair
- Ergonomic foot rest
- IV bar, with hooks

General Specifications, Airstream Horizontal Laminar Flow Clean Benches		
Model	AHS-8C_	
External Dimensions (W x D x H)	Without Base Stand	2680 x 804 x 1480 mm (105.5" x 31.6 x 58.3")
	With Optional Base Stand, 863 mm (34") type	2680 x 804 x 2330 mm (105.5" x 31.6" x 91.7")
Internal Work Area (W x D x H)	2600 x 626 x 880 mm (102.4" x 24.6" x 34.6")	
Air Volume (At Initial Velocity)	1805 m ³ /h (1067 cfm)	
Laminar Airflow Velocity	Average of 0.45 m/s or 90 fpm	
Main Filter Type	ULPA filter with integral metal guards and filter frame gaskets; fully compliant with EN1822 and IEST-RP-CC001.3 requirements	
Main Filter Typical Efficiency	99.9995% at 0.3µm / 99.999% at MPPS	
Pre-Filter	Disposable and non-washable polyester fibers with 85% arrestance / EU3 rated	
Sound Emission as per IEST-RP-CC002.2	63.5 dBA	
Fluorescent Lamp Intensity	>1575 lux (>146 foot candles)	
Cabinet Construction**	Main Body	1.2mm / 0.05" / 18 gauge electro-galvanised steel with white oven-baked epoxy powder coated finish
	Work Zone	1.2 mm / 0.05" / 18 gauge stainless steel grade 304
	Model	AHS-8C1
	Voltage	220-240V, AC, 50Hz, 1Ø
Electrical	Cabinet Power/ Amp	(2 x 85 W) / (2 x 5 A)
	Outlet Maximum Amp	2 x 6 A
	Total Maximum Amp	2 x 11 A
	BTU/ Hr	2 x 2900
Net Weight	320 (705 lbs)	
Shipping Weight*	408 (899 lbs)	
Shipping Dimensions, Maximum (W x D x H)*	2750 x 900 x 1855 mm (108.3" x 35.4" x 73")	
Shipping Volume, Maximum*	4.90 m ³ (176 cu.ft)	

* Cabinet only; excludes optional stand

** Optional glass side available, contact manufacturer



ESCO

WORLD CLASS. WORLDWIDE.

Esco Technologies, Inc. • 2940 Turnpike Drive, Units 15-16 • Hatboro, PA 19040, USA
Toll-Free USA and Canada 888-375-ESCO • Tel 215-441-9661 • Fax 215-441-9660
us.escoglobal.com • usa@escoglobal.com

Esco Micro Pte. Ltd. • 21 Changi South Street 1 • Singapore 486 777
Tel +65 6542 0833 • Fax +65 6542 6920 • mail@escoglobal.com
www.escoglobal.com